

Connector Cable



CID / CLD Series CATALOG

For your safety, read and follow the considerations written in the instruction manual, other manuals and Autonics website.

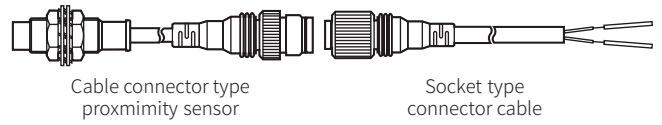
The specifications, dimensions, etc. are subject to change without notice for product improvement. Some models may be discontinued without notice.

Features

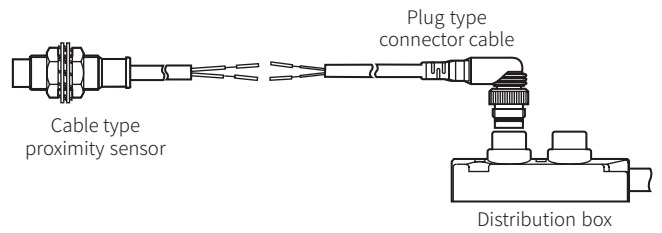
- Supports photoelectric sensors / proximity sensors / door switches / rotary encoders for connector type of Autonics
- Standard / L-shaped connector types available
- Available in various cable lengths

Example of Connections

■ Socket type



■ Plug type



Models

Power supply of sensor and connector cable are should be same.

■ M12 connector (supports photoelectric sensors / proximity sensors / door switches)

Model	Power	Appearance	Cable spec.			Connections						
			Length (L)	Wire spec.	Material	Pin no.	Wiring					
CID2-2	DC 2-wire	Socket I type	2 m	AWG 22 (0.08 mm, 60-core), Insulator diameter: Ø1.3 mm	PVC	Pin no.	Wiring					
CID2-5			5 m									
CLD2-2		Socket L type	2 m									
CLD2-5			5 m									
CID2-2P		Plug I type	2 m					3 → Blue				
CID2-5P			5 m					4 → Brown				
CLD2-2P		Plug L type	2 m									
CLD2-5P	5 m											
CID2-2-I	DC 2-wire (IEC standard)	Socket I type	2 m	AWG 22 (0.08 mm, 60-core), Insulator diameter: Ø1.3 mm	PVC	Pin no.	Wiring					
CID2-5-I			5 m					1 → Brown				
CLD2-2-I		Socket L type	2 m					2 → Blue				
CLD2-5-I			5 m					4 → Blue				
CID3-2	DC 3-wire	Socket I type	2 m	AWG 22 (0.08 mm, 60-core), Insulator diameter: Ø1.3 mm	PVC	Pin no.	Wiring					
CID3-5			5 m									
CLD3-2		Socket L type	2 m					1 → Brown				
CLD3-5			5 m					2 → Blue				
CID3-2P		Plug I type	2 m					3 → Blue				
CLD3-2P			2 m					4 → Black				
CIDH4-2-□	DC 4-wire	Socket I type ⁽⁰¹⁾	2 m	AWG 22 (0.08 mm, 60-core), Insulator diameter: Ø1.65 mm	Oil resistant PVC	Pin no.	Wiring					
CIDH4-3-□			3 m									
CIDH4-5-□			5 m									
CIDH4-7-□			7 m									
CLDH4-2-□		Socket L type ⁽⁰¹⁾	2 m					1 → Brown				
CLDH4-3-□			3 m					2 → White				
CLDH4-5-□			5 m					3 → Blue				
CLDH4-7-□			7 m					4 → Black				
CIDH4-2P		Plug I type	2 m					• Be careful of connection, because color is different when DC 4-wire connector cable is used for DC 2-wire sensor..				
CIDH4-3P			3 m									
CIDH4-5P			5 m									
CIDH4-7P		Plug L type	7 m									
CLDH4-2P			2 m									
CLDH4-3P			3 m									
CLDH4-5P			5 m									
CLDH4-7P		7 m										
CIA2-2		AC 2-wire	Socket I type						2 m	AWG 22 (0.08 mm, 60-core), Insulator diameter: Ø1.3 mm	PVC	Pin no.
CIA2-5	5 m											
CLA2-2	Socket L type		2 m									
CLA2-5			5 m									
CIA2-2P	Plug I type		2 m	Oil resistant PVC	Pin no.	Wiring						
CIA2-5P			5 m									
CLA2-2P	Plug L type		2 m				1 → Brown					
CLA2-5P			5 m				4 → Brown					
CIAH2-2	Socket I type		2 m				2 → Blue					
CIAH2-5			5 m									
CLAH2-2	Socket L type		2 m									
CLAH2-5			5 m									
CIAH2-2P	Plug I type		2 m									
CIAH2-5P			5 m									
CLAH2-2P	Plug L type		2 m									
CLAH2-5P			5 m									

(01) Varied by the acquired approval, model name (-□) are different. (No mark: ERL, A: □ → ERL)

■ M8 connector (supports photoelectric sensors / proximity sensors)

Model	Power	Appearance	Cable spec.			Connections		
			Length (L)	Wire spec.	Material	Pin no.	Wiring	
CID408-2	DC 4-wire	Socket I type	2 m	AWG 22 (0.08 mm, 60-core), Insulator diameter: Ø1.3 mm	PVC	Pin no.	Wiring	
CID408-5			5 m					
CLD408-2		Socket L type	2 m					1 → Brown
CLD408-5			5 m					2 → White
						3 → Blue		
						4 → Black		

■ M17 connector (supports rotary encoders)

Model	Power	Appearance	Cable length (L)	No. of pins	Connections																														
CID6S-2	DC	Socket I type	2 m	6-pin (Totem pole / NPN open collector / voltage output)	<table border="1"> <thead> <tr> <th>Pin no.</th> <th>Wiring</th> </tr> </thead> <tbody> <tr><td>1</td><td>Black</td></tr> <tr><td>2</td><td>White</td></tr> <tr><td>3</td><td>Orange</td></tr> <tr><td>4</td><td>Brown</td></tr> <tr><td>5</td><td>Blue</td></tr> <tr><td>6</td><td>Shield</td></tr> </tbody> </table>	Pin no.	Wiring	1	Black	2	White	3	Orange	4	Brown	5	Blue	6	Shield																
Pin no.			Wiring																																
1			Black																																
2			White																																
3			Orange																																
4			Brown																																
5			Blue																																
6			Shield																																
CID6S-5			5 m																																
CID6S-10			10 m																																
CID6S-15			15 m																																
CID9S-2			2 m	9-pin (Line driver output)	<table border="1"> <thead> <tr> <th>Pin no.</th> <th>Wiring</th> <th>Pin no.</th> <th>Wiring</th> </tr> </thead> <tbody> <tr><td>1</td><td>Black</td><td>6</td><td>Gray</td></tr> <tr><td>2</td><td>Red</td><td>7</td><td>Orange</td></tr> <tr><td>3</td><td>Brown</td><td>8</td><td>Yellow</td></tr> <tr><td>4</td><td>Blue</td><td>9</td><td>Shield</td></tr> <tr><td>5</td><td>White</td><td></td><td></td></tr> </tbody> </table>	Pin no.	Wiring	Pin no.	Wiring	1	Black	6	Gray	2	Red	7	Orange	3	Brown	8	Yellow	4	Blue	9	Shield	5	White								
Pin no.			Wiring			Pin no.	Wiring																												
1	Black	6	Gray																																
2	Red	7	Orange																																
3	Brown	8	Yellow																																
4	Blue	9	Shield																																
5	White																																		
CID9S-5	5 m																																		
CID9S-10	10 m																																		
CID13S-2	2 m	13-pin	<table border="1"> <thead> <tr> <th>Pin no.</th> <th>Wiring</th> <th>Pin no.</th> <th>Wiring</th> </tr> </thead> <tbody> <tr><td>1</td><td>Brown</td><td>8</td><td>White/Brown</td></tr> <tr><td>2</td><td>Red</td><td>9</td><td>White/Red</td></tr> <tr><td>3</td><td>Orange</td><td>10</td><td>White/Orange</td></tr> <tr><td>4</td><td>Yellow</td><td>11</td><td>Shield</td></tr> <tr><td>5</td><td>Blue</td><td>12</td><td>White</td></tr> <tr><td>6</td><td>Purple</td><td>13</td><td>Black</td></tr> <tr><td>7</td><td>Gray</td><td></td><td></td></tr> </tbody> </table>	Pin no.	Wiring	Pin no.	Wiring	1	Brown	8	White/Brown	2	Red	9	White/Red	3	Orange	10	White/Orange	4	Yellow	11	Shield	5	Blue	12	White	6	Purple	13	Black	7	Gray		
Pin no.	Wiring			Pin no.	Wiring																														
1	Brown			8	White/Brown																														
2	Red	9	White/Red																																
3	Orange	10	White/Orange																																
4	Yellow	11	Shield																																
5	Blue	12	White																																
6	Purple	13	Black																																
7	Gray																																		
CID13S-5	5 m																																		
CID13S-10	10 m																																		

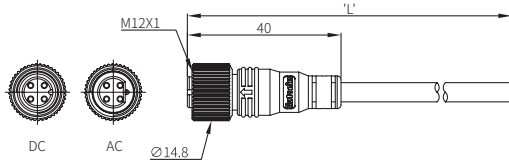
Dimensions

- Unit: mm, For the detailed drawings, follow the Autonics website.
- Cable thickness is different by cable material.

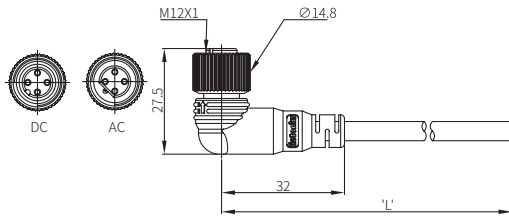
Cable Material	Cable thickness
PVC	M12: Ø 5 mm, M8: Ø 4 mm
Oil resistant PVC	Ø 6 mm

■ M12 connector (supports photoelectric sensors / proximity sensors / door switches)

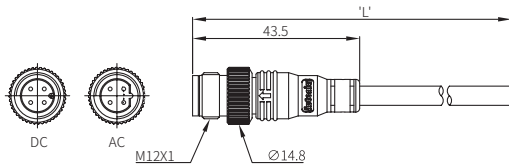
• Socket I type



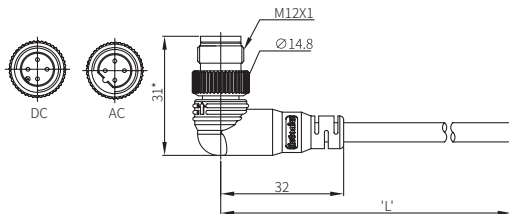
• Socket L type



• Plug I type



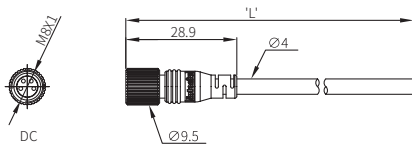
• Plug L type



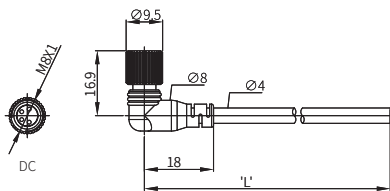
* Oil resistant PVC Model: 31.3

■ M8 connector (supports photoelectric sensors / proximity sensors)

• Socket I type

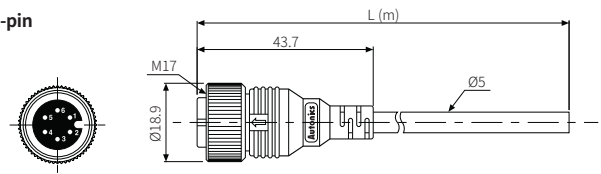


• Socket L type

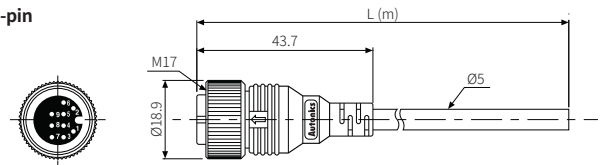


■ M17 connector (supports rotary encoders)

• 6-pin



• 9-pin



• 13-pin

